

**MWC SERIES
MIKROPOR WATER-COOLED
AFTERCOOLER SERIES**

Manufacturing Forward





Mikropor began its journey in 1987 with a passion to create “Tomorrow’s Technology” and has become one of the leading manufacturers of atmospheric air filtration solutions and compressed air treatment systems for a variety of industries.

By closely following the latest developments in technology, Mikropor’s “Best in Class” products and solutions are appreciated by customers in more than 100 countries.

The company’s sustainable growth has been provided by its passion for innovation and commitment to quality, as well as its dedication to technology. Mikropor is an environmentally conscious company that values people, while developing products that extend the needs and expectations of customers.

With this mission, Mikropor continues to become one of the most recognized brands in the world by expanding its global penetration in the field of technological filtration and contributes to a healthier planet.

www.mikropor.com

MWC SERIES MIKROPOR WATER-COOLED AFTERCOOLER SERIES

Mikropor is aware of the importance of high-quality compressed air. With the MWC Series, the aim is to provide customers with the highest quality compressed air by preventing high temperatures through the after cooler with low pressure drop.



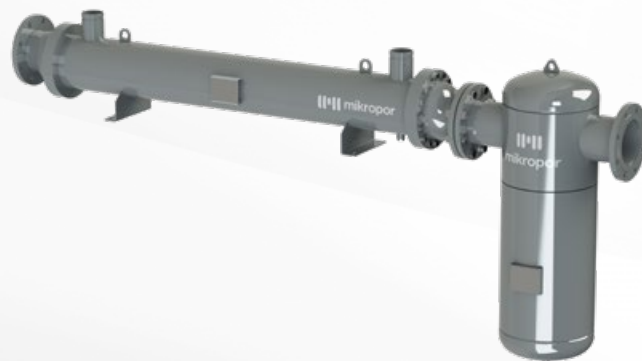
High separation efficiency



Plug-in use with Mikropor water separators

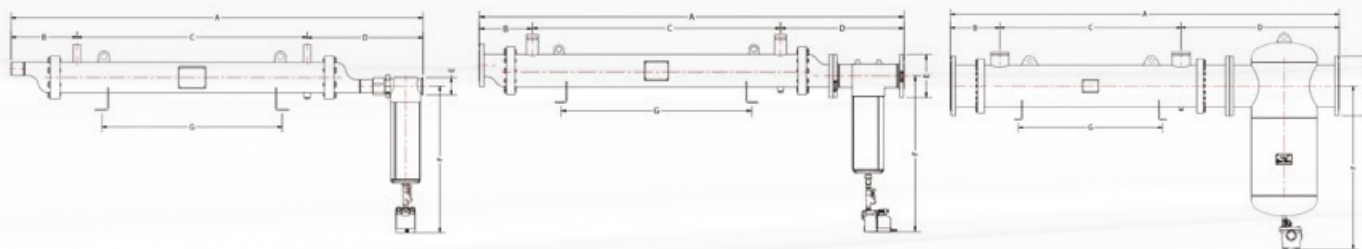


Reliable design



With its practical flanged design, the MWC Series provides high-quality compressed air by preventing high temperatures with low pressure drop.

Technical Specifications



All the given data has been calculated according to the conditions below;

Model Name	A (mm)	B (mm)	C (mm)	D (mm)	E (mm)	F (mm)	G (mm)
MWC-650	1870	300	1047	530	G 2 1/2"	666	840
MWC-900	1870	300	1047	530	G 2 1/2"	666	840
MWC-1100	1870	300	1047	530	G 2 1/2"	666	840
MWC-1500	2032	318	1137	577	G 3"	717	900
MWC-1800	2032	318	1137	577	G 3"	717	900
MWC-2100	2032	318	1137	577	G 3"	717	900
MWC-2800	2185	274	1275	632	DN100	796	1000
MWC-3400	2185	274	1275	632	DN100	796	1000
MWC-4500	2290	287	1360	645	DN100	884	1065
MWC-5400	2290	287	1360	645	DN100	976	1065
MWC-6200	2571	299	1400	874	DN150	1081	110
MWC-7500	2640	299	1400	944	DN150	1115	1100
MWC-9000	2805	342	1374	1090	DN200	1126	1100
MWC-11000	2805	342	1374	1090	DN200	1128	1100
MWC-15000	3006	382	1402	1222	DN300	1264	1135
MWC-20000	3002	378	1402	1222	DN300	1264	1135
MWC-25000	3301	562	1350	1390	DN350	1322	1135
MWC-30000	3317	562	1350	1405	DN350	1421	1135

MWC SERIES MIKROPOR WATER-COOLED AFTERCOOLER SERIES

Model Name	Air Flow to be Cooled Nm ³ /h	Required Water Flow (m ³ /h)	Compressed Air Connection Size	Water Separator Model	Water Connection	Drain Type
MWC-650	650	3	G 2"	G1200WS	G 1"	Electronic Zero-Loss*
MWC-900	900	5	G 2"	G1200WS	G 1"	Electronic Zero-Loss*
MWC-1100	1100	6	G 2"	G1200WS	G 1"	Electronic Zero-Loss*
MWC-1500	1500	8	G 3"	G2200WS	G 1 1/2"	Electronic Zero-Loss*
MWC-1800	1800	10	G 3"	G2200WS	G 1 1/2"	Electronic Zero-Loss*
MWC-2100	2100	11	G 3"	G2200WS	G 1 1/2"	Electronic Zero-Loss*
MWC-2800	2800	15	DN100	GO-HC-3400 WS	VIC 2"	Electronic Zero-Loss*
MWC-3400	3400	18	DN100	GO-HC-3400 WS	VIC 2"	Electronic Zero-Loss*
MWC-4500	4500	24	DN100	GO-HC-4500 WS	VIC 2 1/2"	Electronic Zero-Loss*
MWC-5400	5400	29	DN100	GO-HC-5400 WS	VIC 2 1/2"	Electronic Zero-Loss*
MWC-6200	6200	32	DN150	F6500WS	VIC 3"	Electronic Zero-Loss*
MWC-7500	7500	39	DN150	F8500WS	VIC 3"	Electronic Zero-Loss*
MWC-9000	9000	48	DN200	F11000WS	VIC 4"	Electronic Zero-Loss*
MWC-11000	11000	58	DN200	F11000WS	VIC 4"	Electronic Zero-Loss*
MWC-15000	15000	79	DN300	F17000WS	VIC 5"	Automatic Zero-Loss
MWC-20000	20000	105	DN300	F21000WS	VIC 5"	Automatic Zero-Loss
MWC-25000	25000	131	DN350	F25500WS	VIC 6"	Automatic Zero-Loss
MWC-30000	30000	157	DN350	F30000WS	VIC 6"	Automatic Zero-Loss

*For models up to MWC-11000, drain voltage could be chosen 115V/230V/24VAC/24VDC

Compressed Air Inlet Temp.	Compressed Air Outlet Temp.	Compressed Air Pressure	Max. Allowable Working Pressure	Required Water Temp.
120°C	+10°C Higher than Water Inlet Temp.	7 barg	16 barg	15°C

MWC SERIES MIKROPOR WATER-COOLED AFTERCOOLER SERIES



Ahi Evran OSB Mah. Oğuz Cad. No: 5 Sincan, 06935, Ankara-Türkiye

+90 312 267 0700 ✉ mikropor@mikropor.com

📷 🌐 📧 mikropor

www.mikropor.com